

# SURVEY VESSEL BEAUFORT EXPLORER

Custom designed  
and fabricated  
Catamaran



36 ' LENGTH  
10' BEAM  
5' DRAFT

Outfitted for hydrographic  
surveying and deployment of  
hydrometric instruments







POWERED BY TWIN  
VOLVO PENTA D6  
330 HP DIESELS

***Cruises at 20-25 Kn***

***Duoprop***



# FEATURES

**2000 Litres fuel capacity**

**Fridge**

**Hotplate**

**Coffee maker**

**microwave**

**Head**

**Seats up to 9**

**Anchors fore and aft**

# TYPICAL HYDROGRAPHIC SURVEY EQUIPMENT PACKAGE

**R2 Sonic 2022 multibeam  
system**

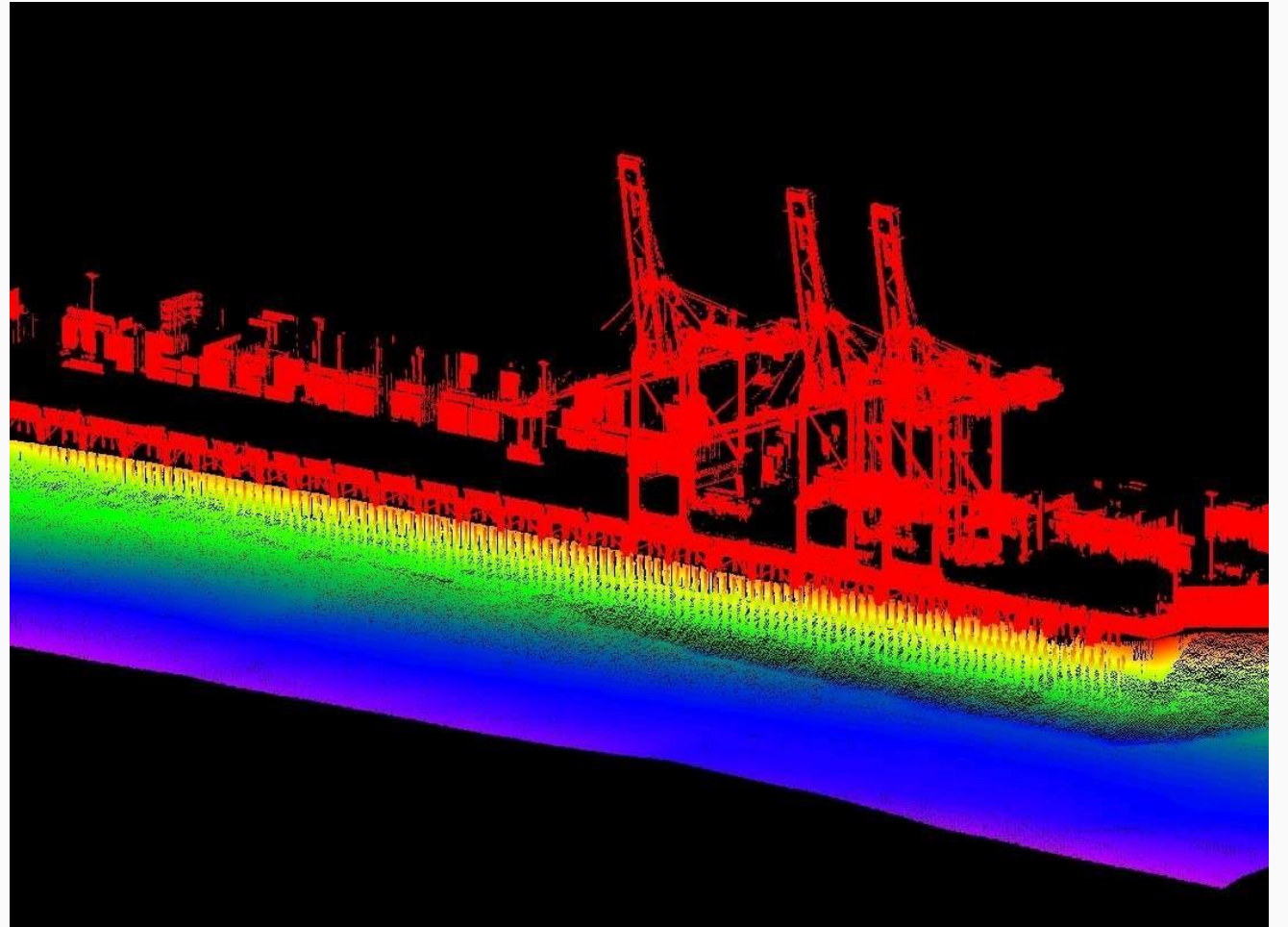
**Applanix POS position &  
orientation system**

**Hypack software - full  
suite**

**AML sound velocity  
probe/profiler**

**Computers and monitors**

EXAMPLE OF  
MULTIBEAM  
BATHYMETRY AND  
VESSEL MOUNTED  
LIDAR SCAN



EXAMPLE OF HIGH  
RESOLUTION MULTIBEAM  
BATHYMETRY FOR  
OUTFALL PIPE LOCATION

